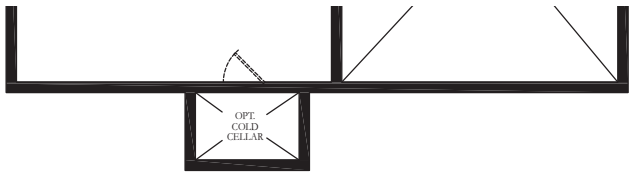
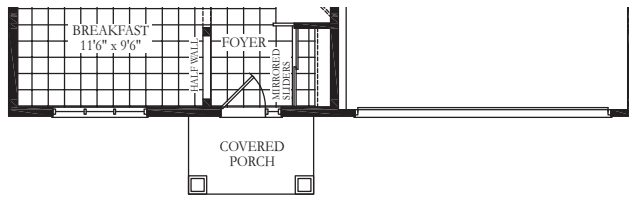




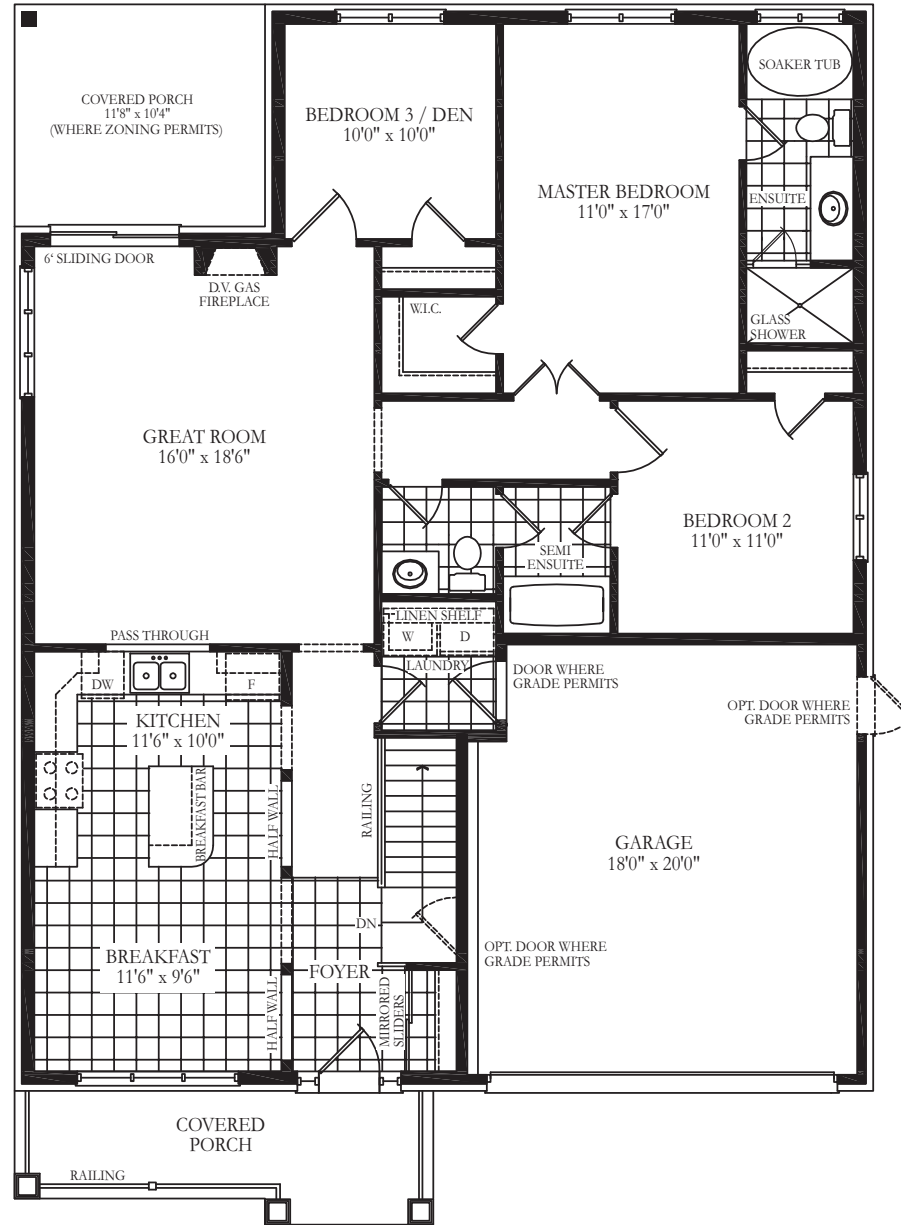
Elev. B



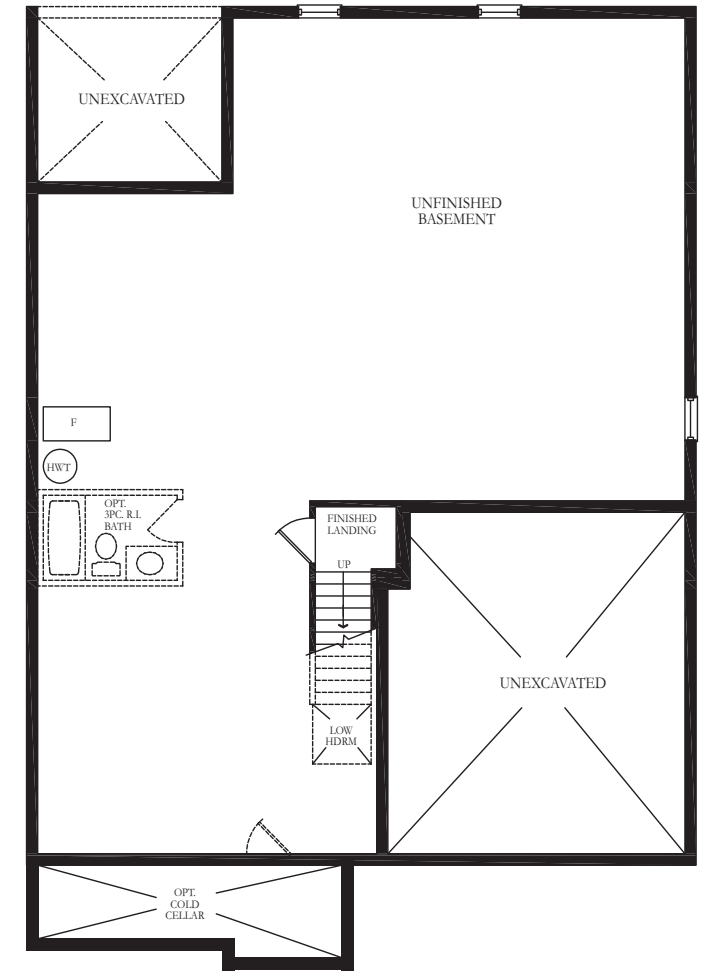
BASEMENT FLOOR ELEV. B & C



GROUND FLOOR ELEV. B & C

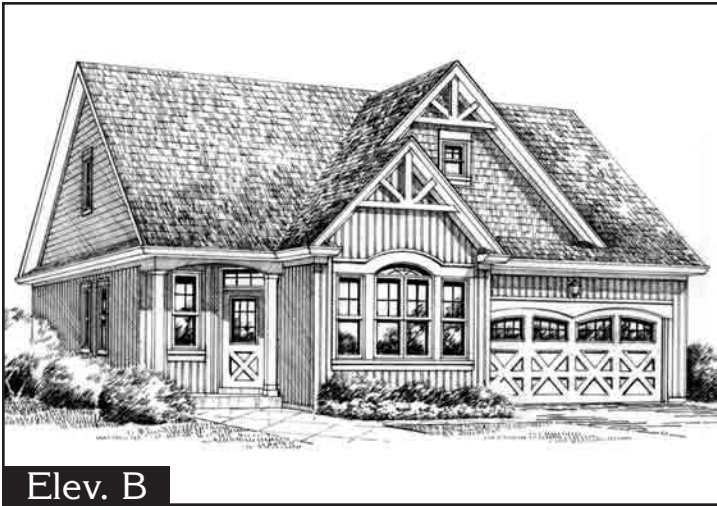


GROUND FLOOR ELEV. A

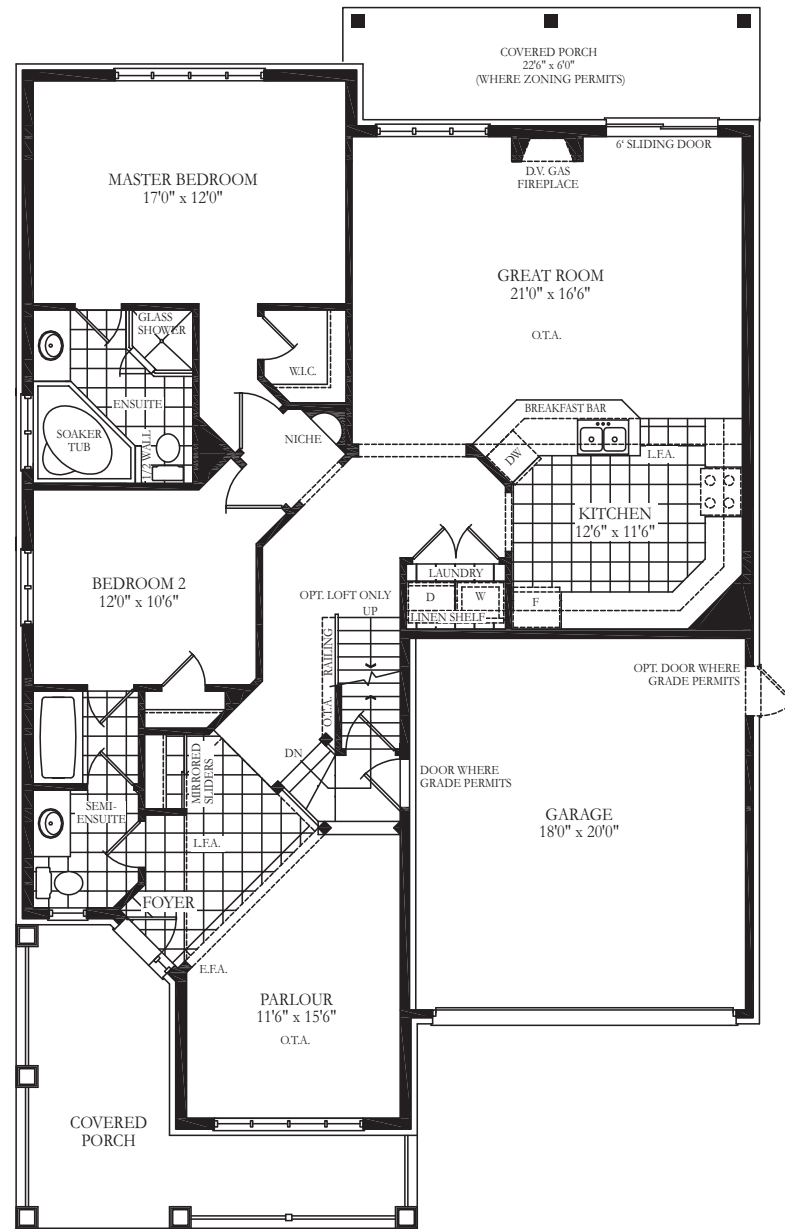


BASEMENT FLOOR ELEV. A

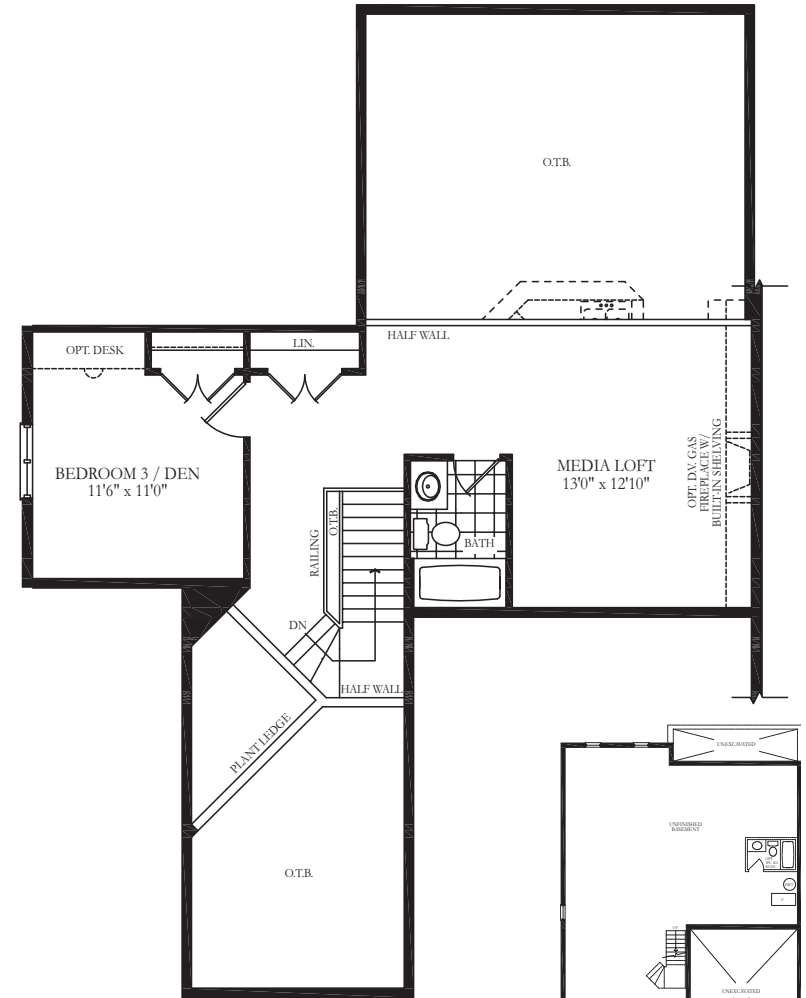
**Regatta** 1,527 sq.ft.  
 Incl. 12 sq.ft. finished lower area



Elev. B



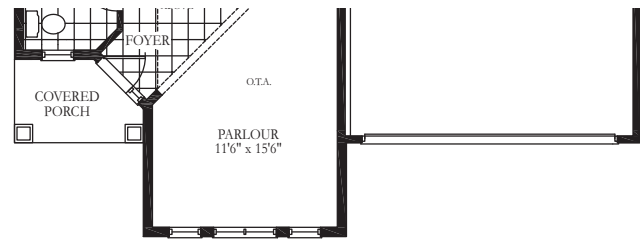
GROUND FLOOR ELEV. A



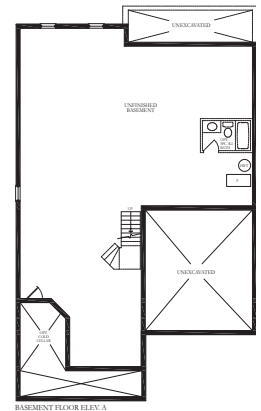
OPT. LOFT FLOOR ELEV. A, B & C



BASEMENT FLOOR ELEV. B & C



GROUND FLOOR ELEV. B & C

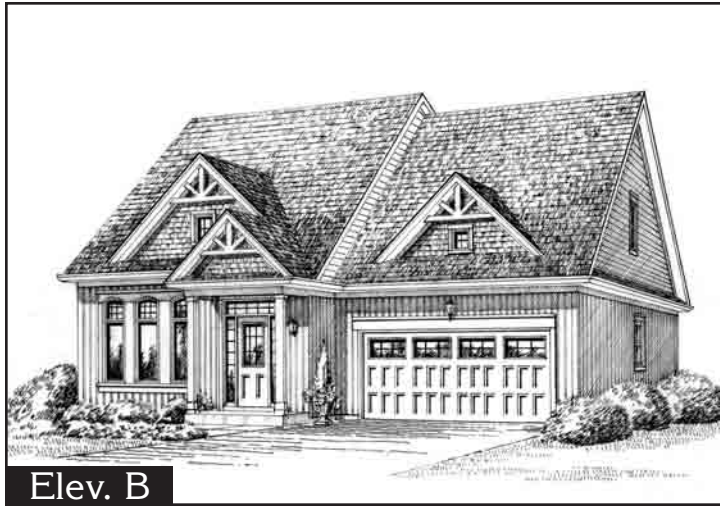


BASEMENT FLOOR ELEV. A

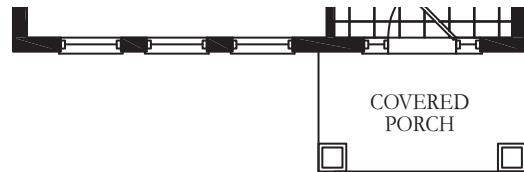
# Buccaneer

A - 1,653 sq.ft. W/LOFT- 2,162 sq.ft.

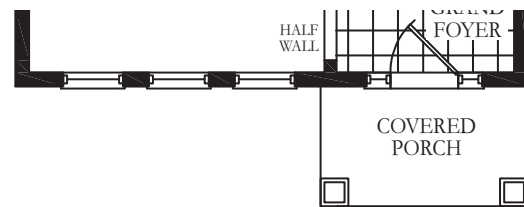
B/C - 1,651 sq.ft. W/LOFT- 2,160 sq.ft.



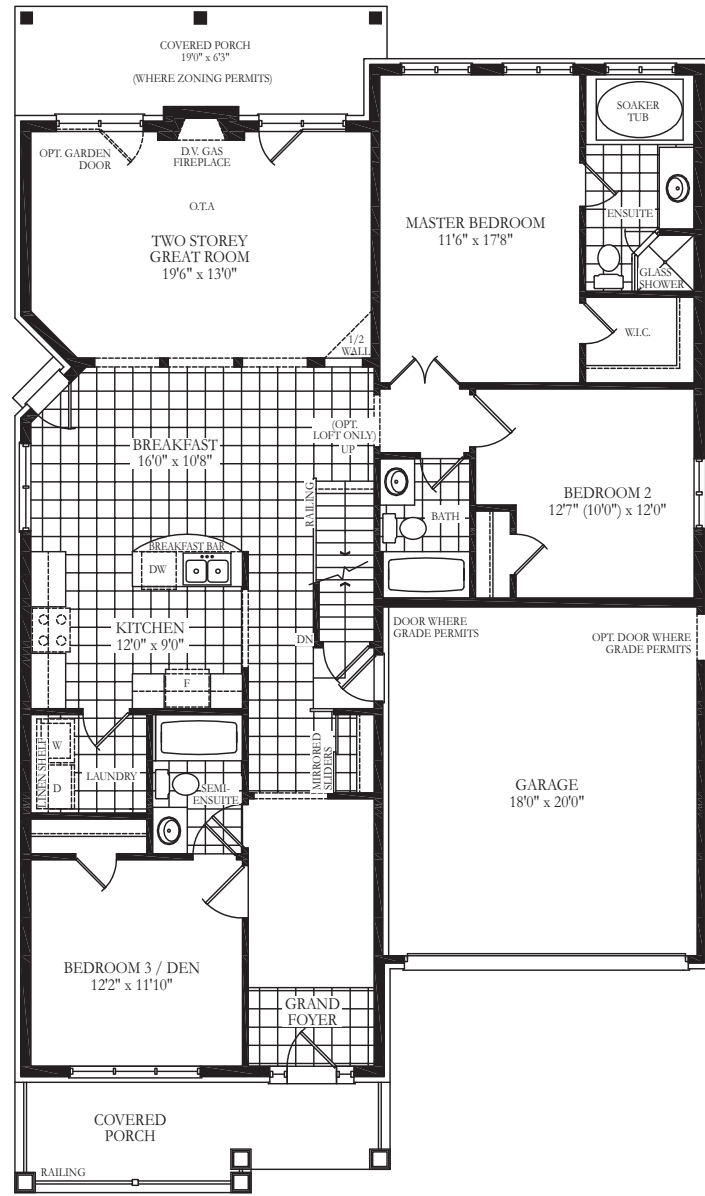
Elev. B



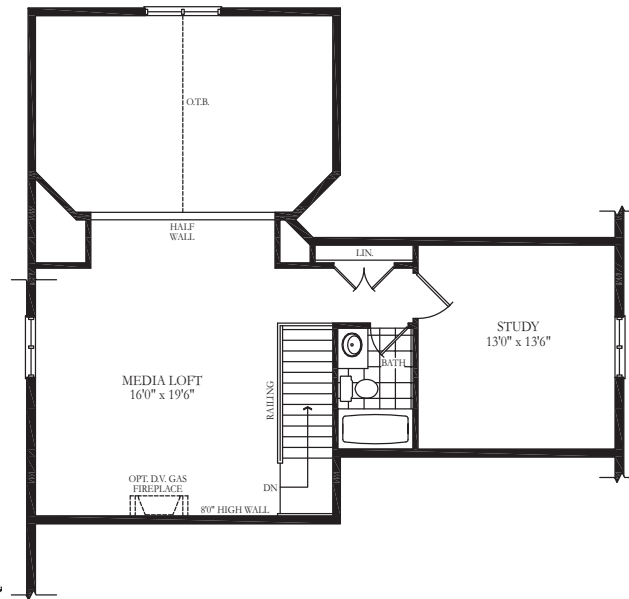
GROUND FLOOR ELEV. B & C



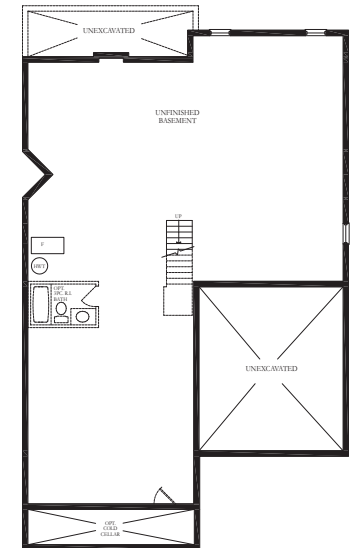
ALT. GROUND FLOOR ELEV. B & C



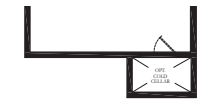
GROUND FLOOR ELEV. A



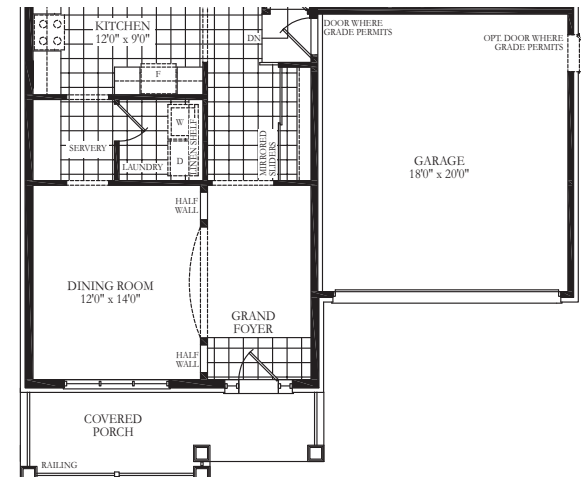
OPT. LOFT FLOOR ELEV. A, B & C



BASEMENT FLOOR ELEV. A



BASEMENT FLOOR ELEV. B & C



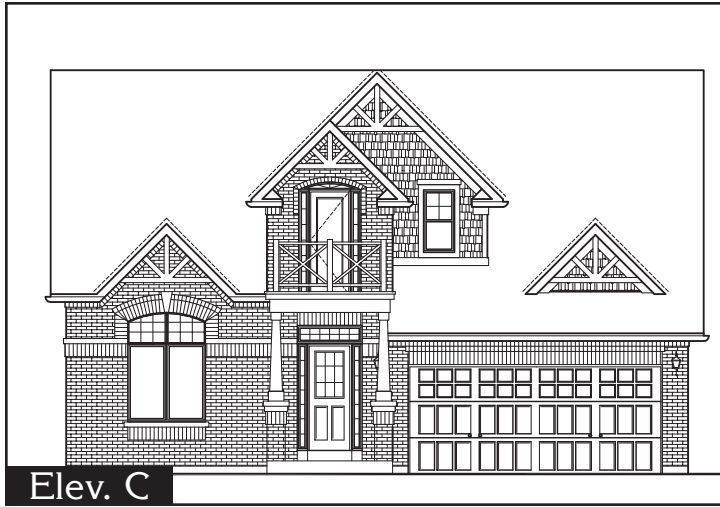
ALT. GROUND FLOOR ELEV. A

# Viking

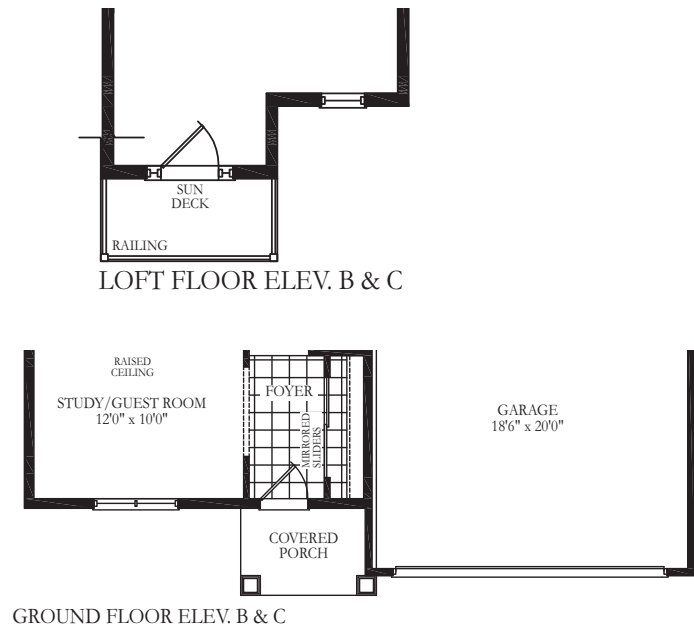
A - 1,767 sq.ft. W/LOFT- 2,338 sq.ft.

B/C - 1,762 sq.ft. W/LOFT- 2,333 sq.ft.

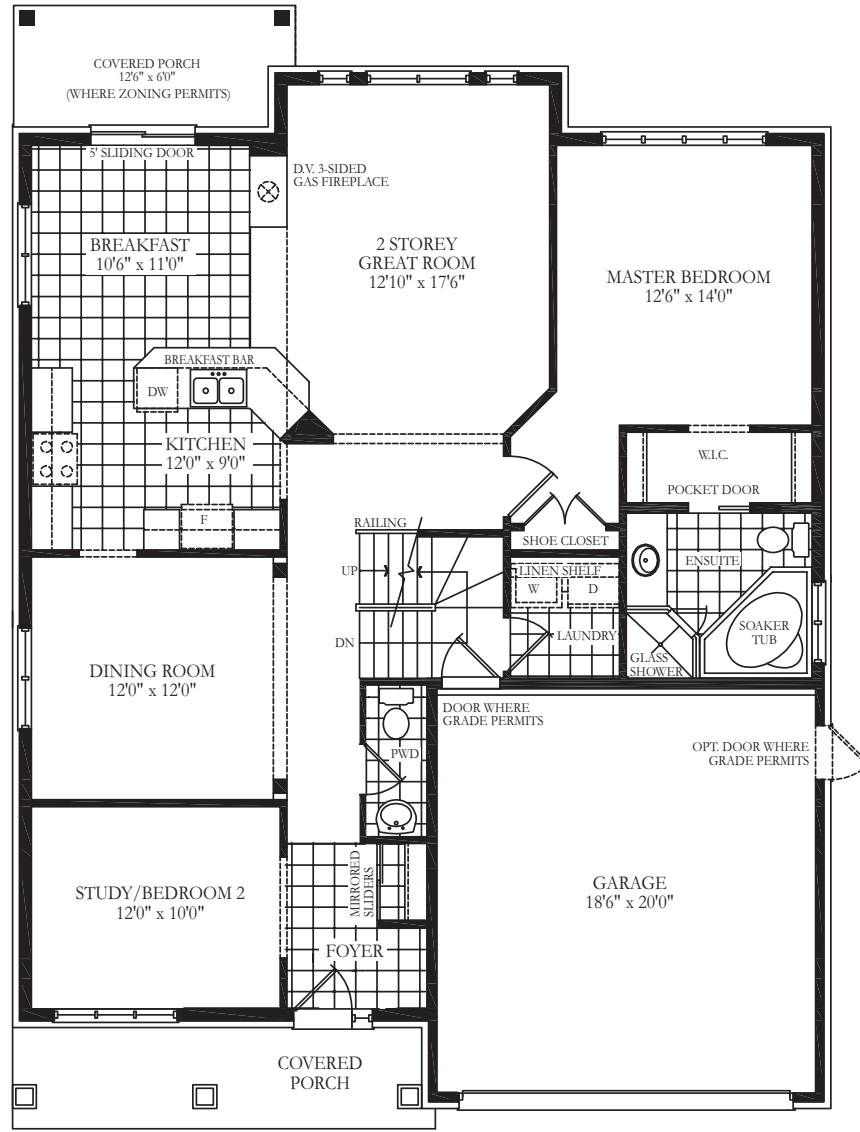
Specifications and dimensions correct at press time and are subject to change without notice. Artist's concept. E.&O.E. 2010



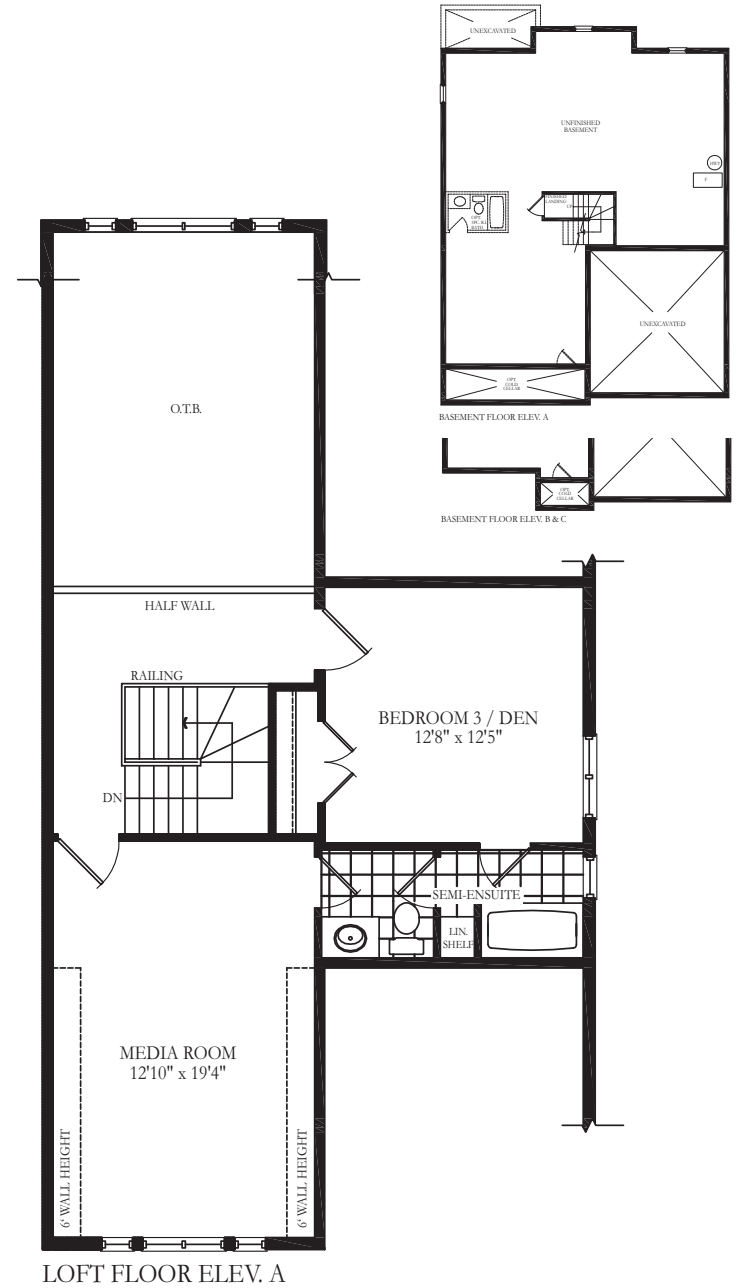
Elev. C



GROUND FLOOR ELEV. B & C



GROUND FLOOR ELEV. A



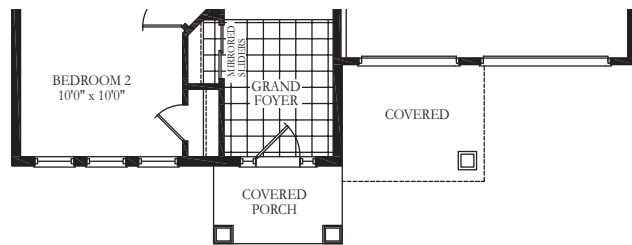
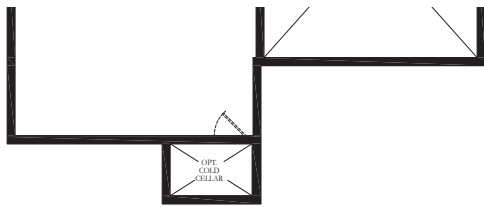
LOFT FLOOR ELEV. A

# Sprintsail

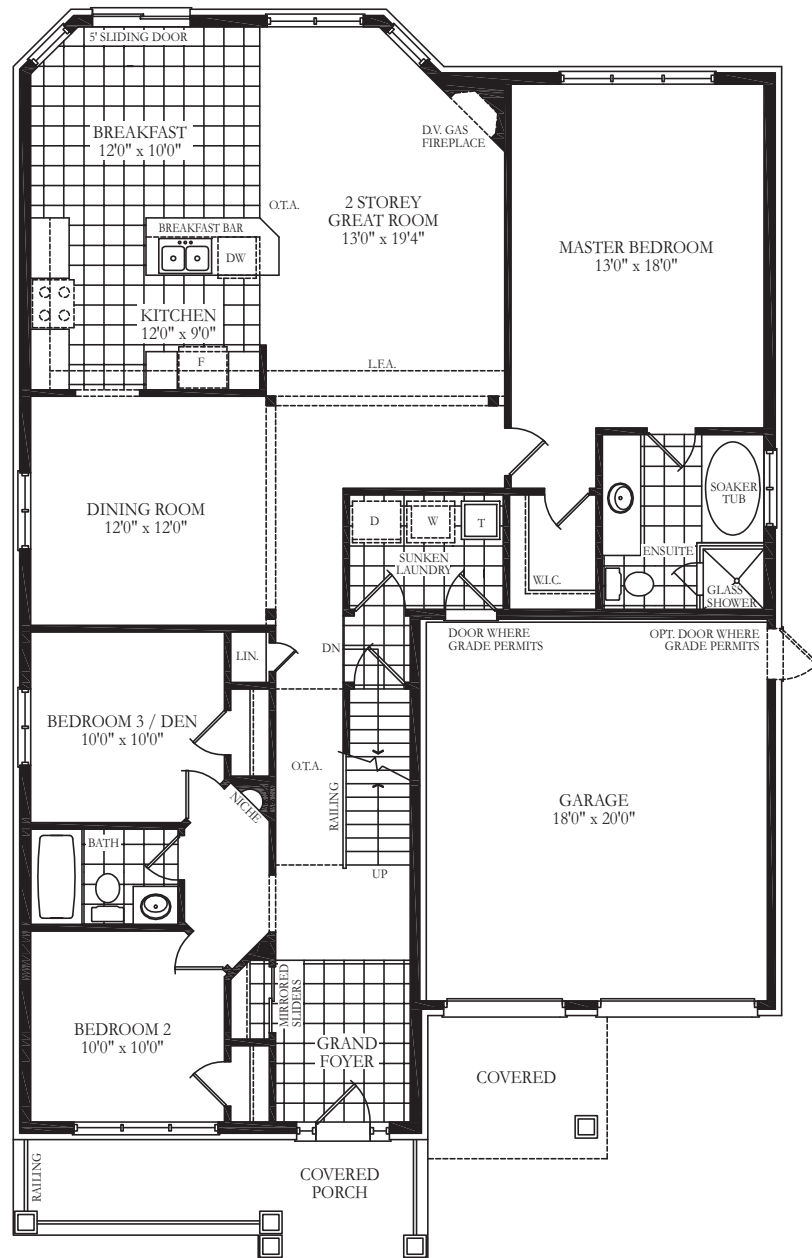
A-2,091 sq.ft., B/C-2,062 sq.ft.  
Incl. 14 sq.ft. finished lower area



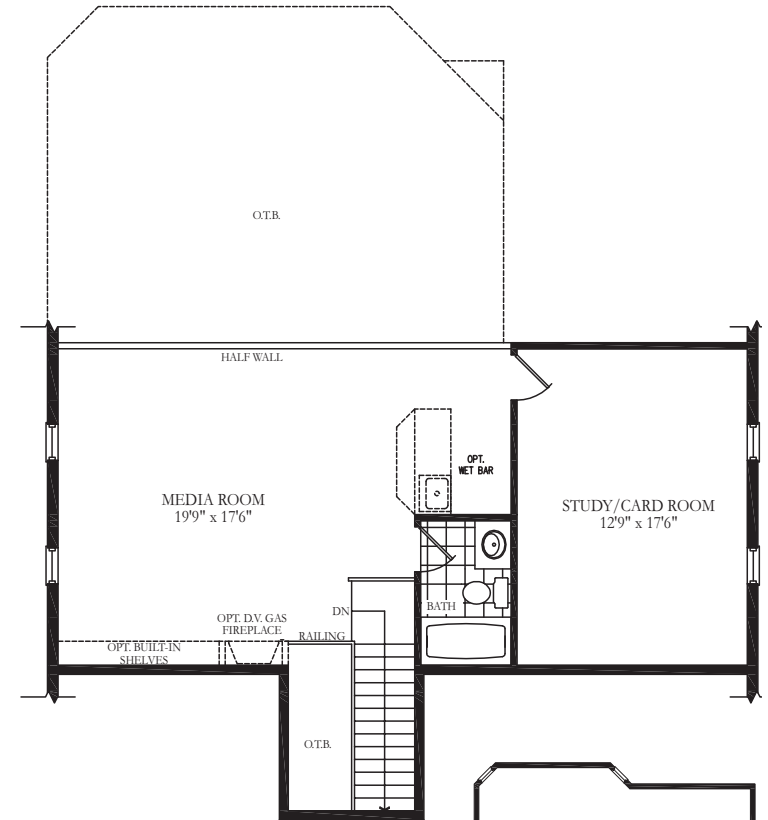
Elev. C



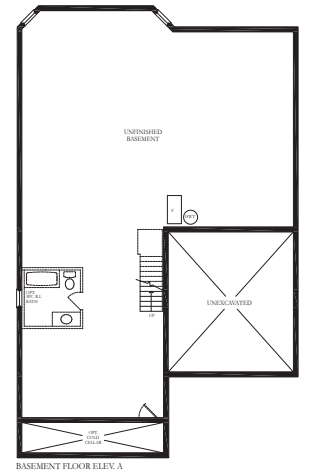
GROUND FLOOR ELEV. B & C



GROUND FLOOR ELEV. A



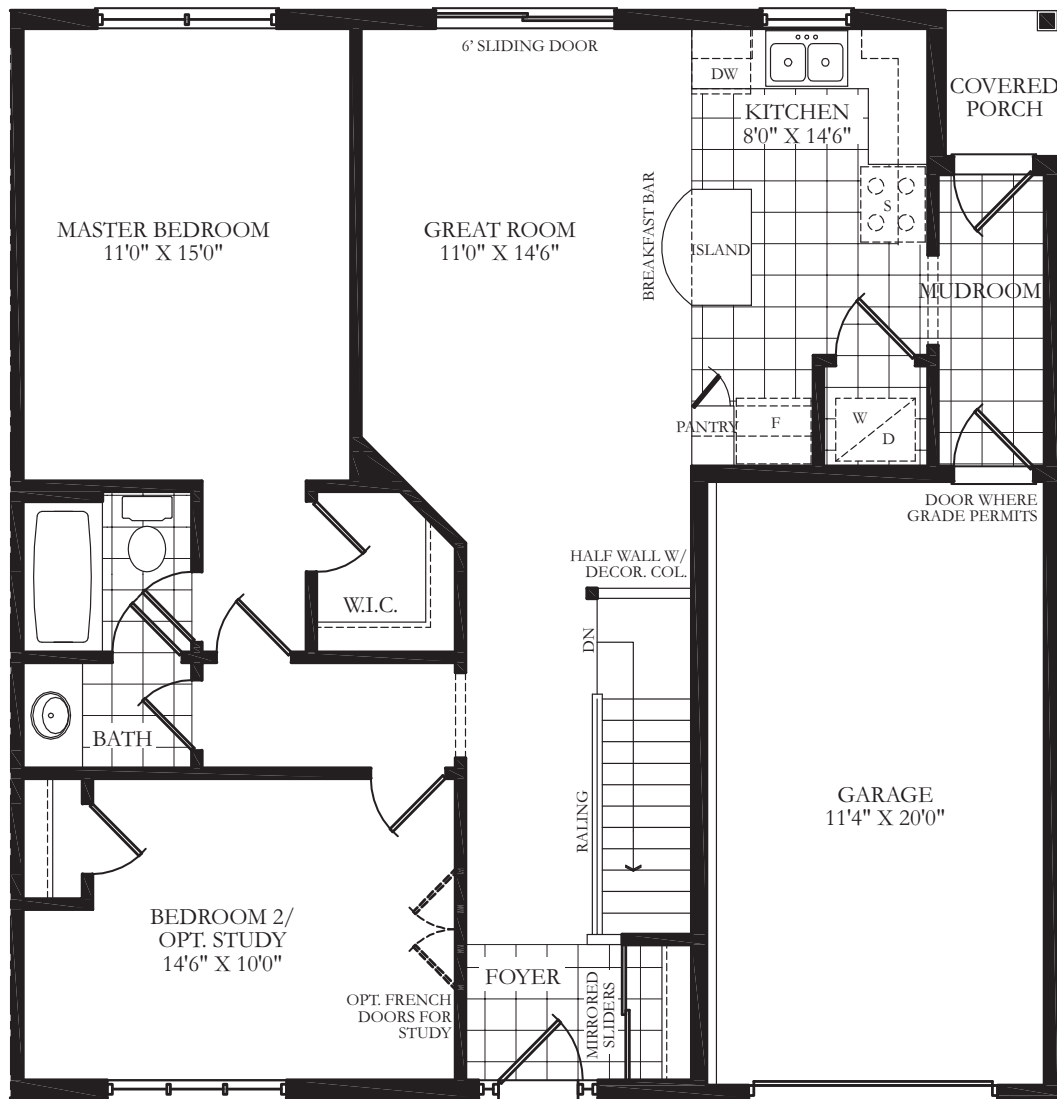
LOFT FLOOR ELEV. A, B & C



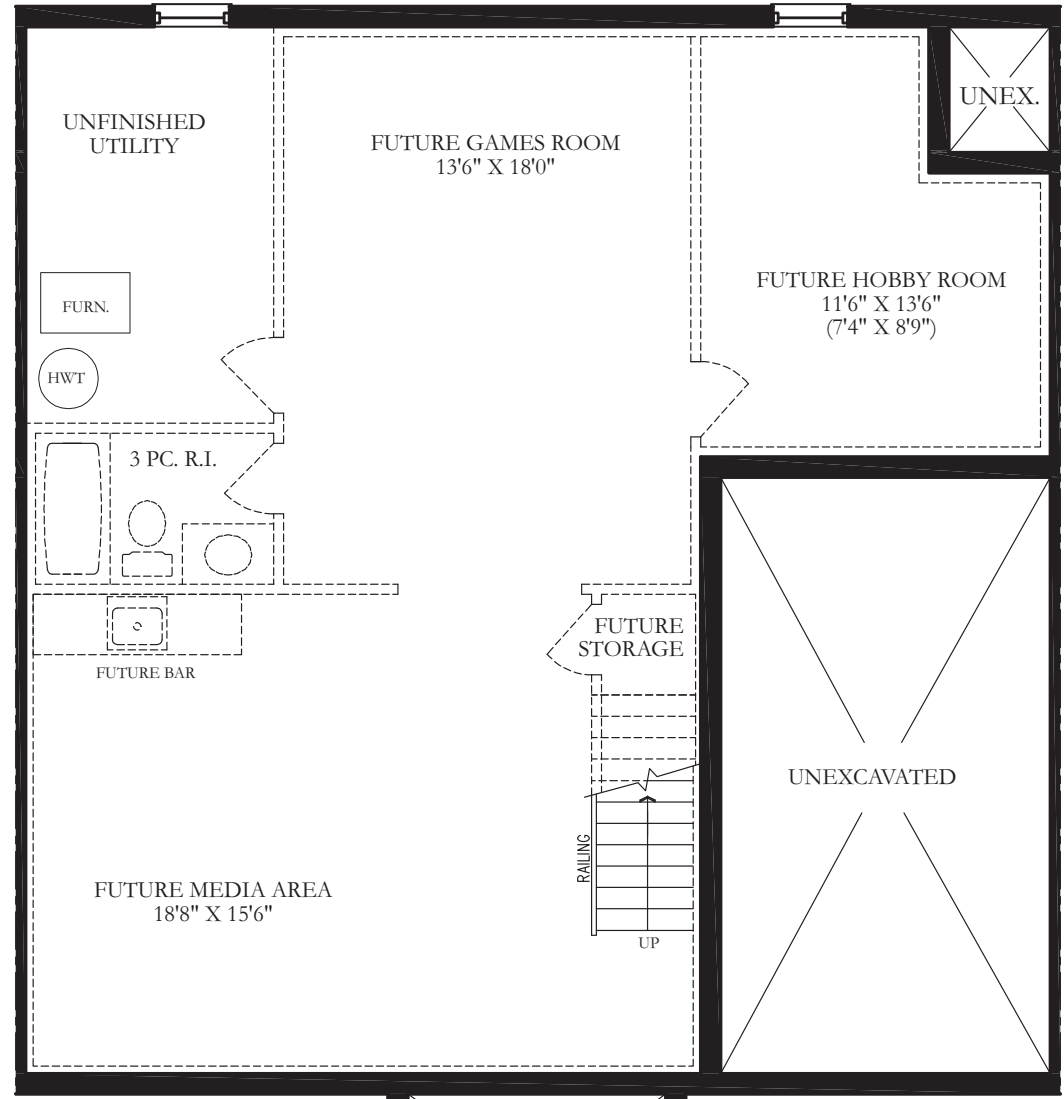
BASEMENT FLOOR ELEV. A

# Coaster

A-2,442 sq.ft., B/C-2,439 sq.ft.



GROUND FLOOR  
ELEV "A"

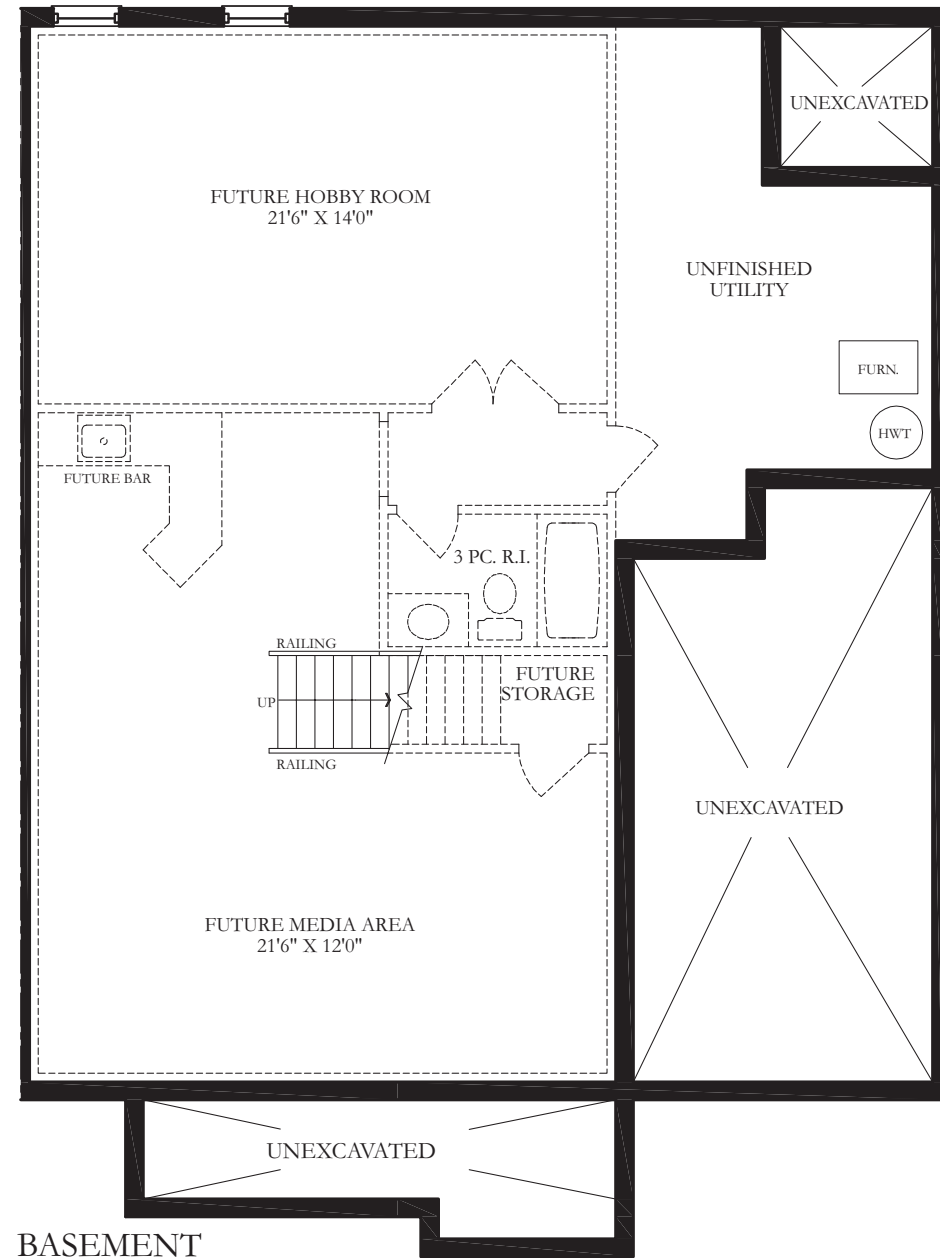
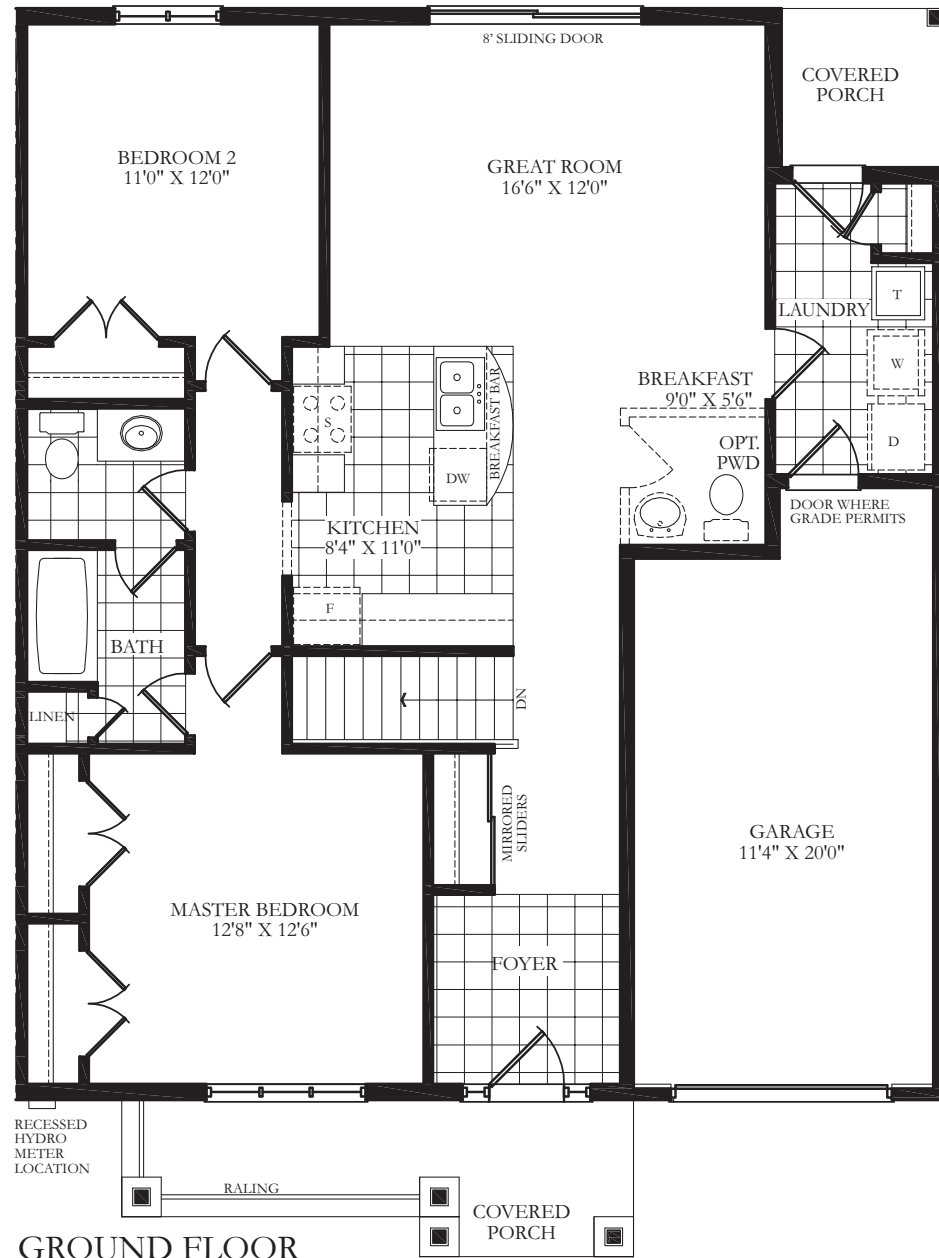


BASEMENT  
PLAN "A"

# Erie 1,002 sq.ft.

TH-1

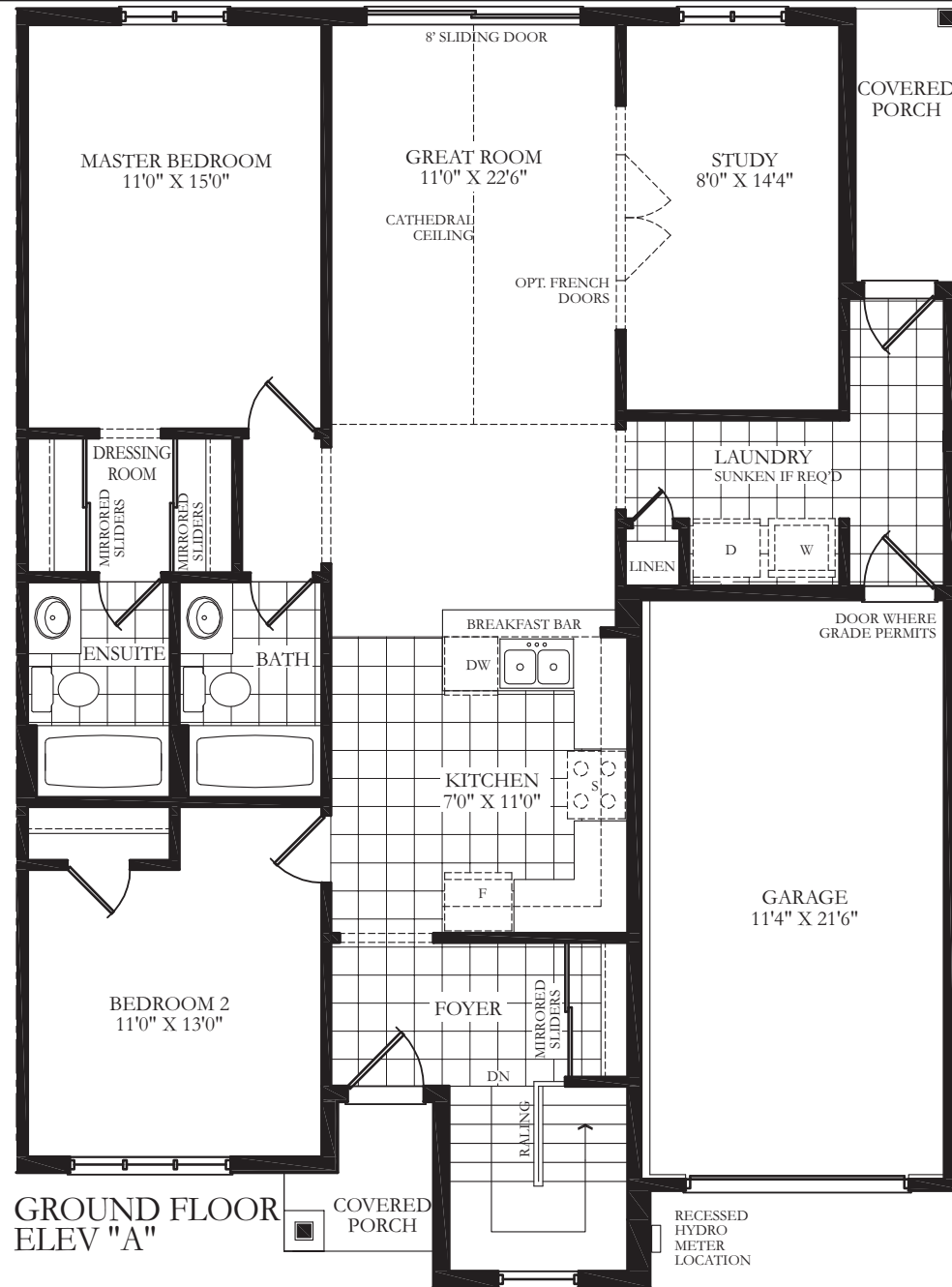
Specifications and dimensions correct at press time and are subject to change without notice. Artist's concept. E.&O.E. 2010



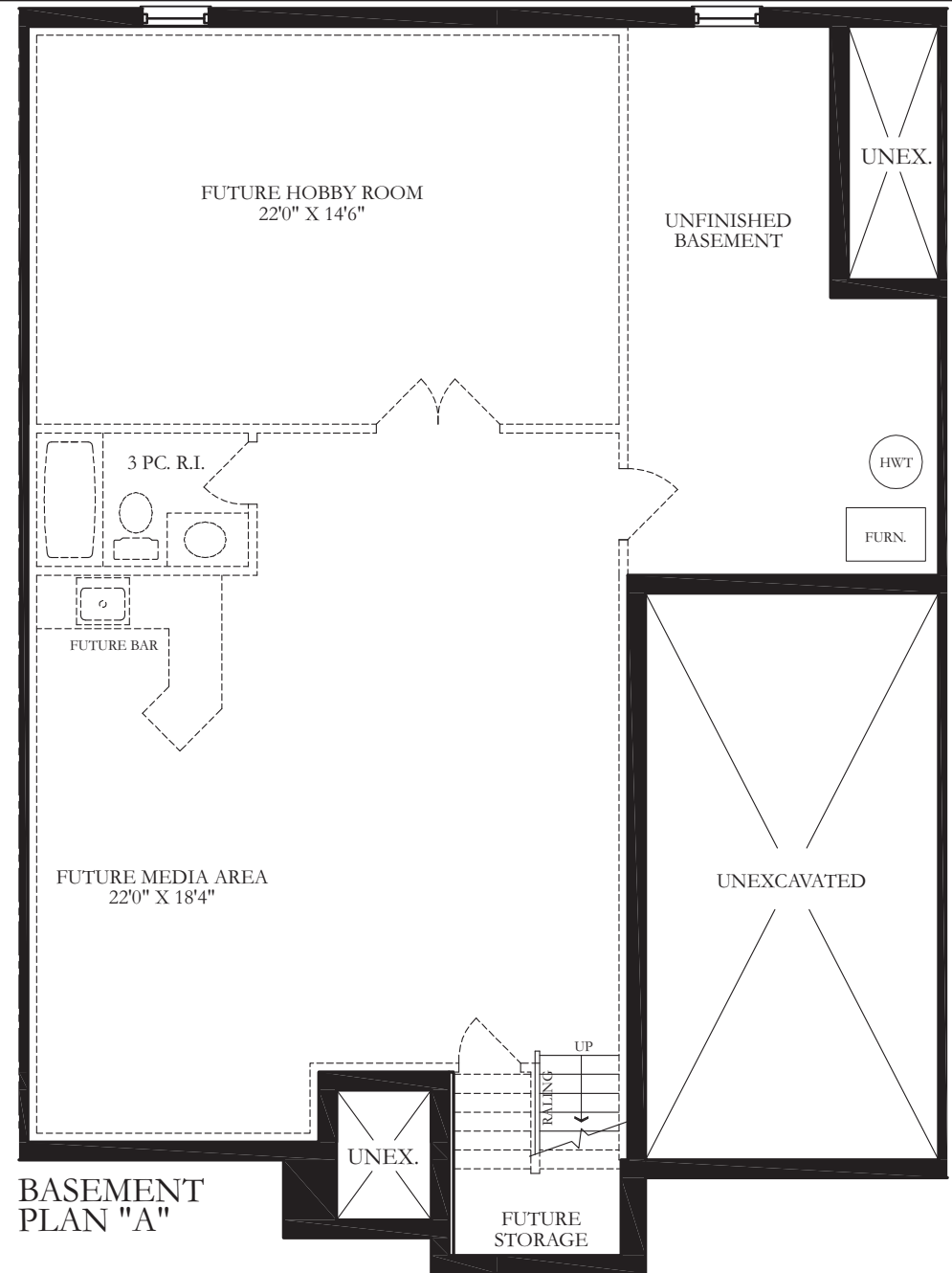
# Dover 1,127 sq.ft.

TH-2

Specifications and dimensions correct at press time and are subject to change without notice. Artist's concept. E.&O.E. 2010



GROUND FLOOR  
ELEV "A"

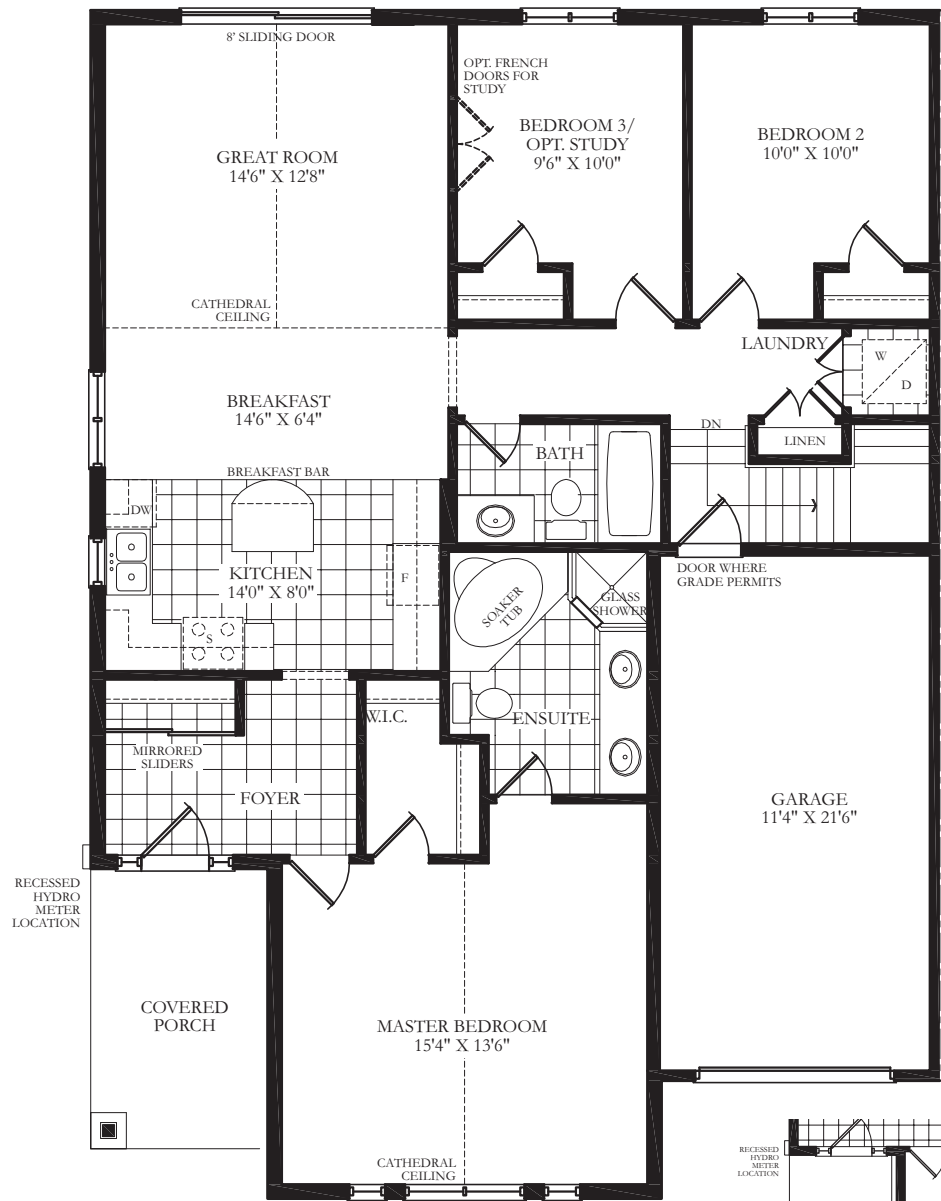


BASEMENT  
PLAN "A"

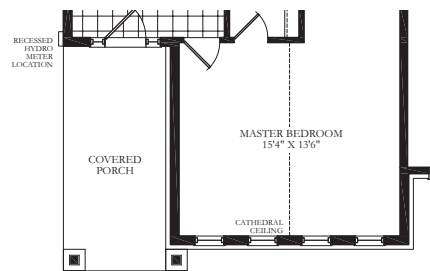
# Clipper 1,250 sq.ft.

TH-3

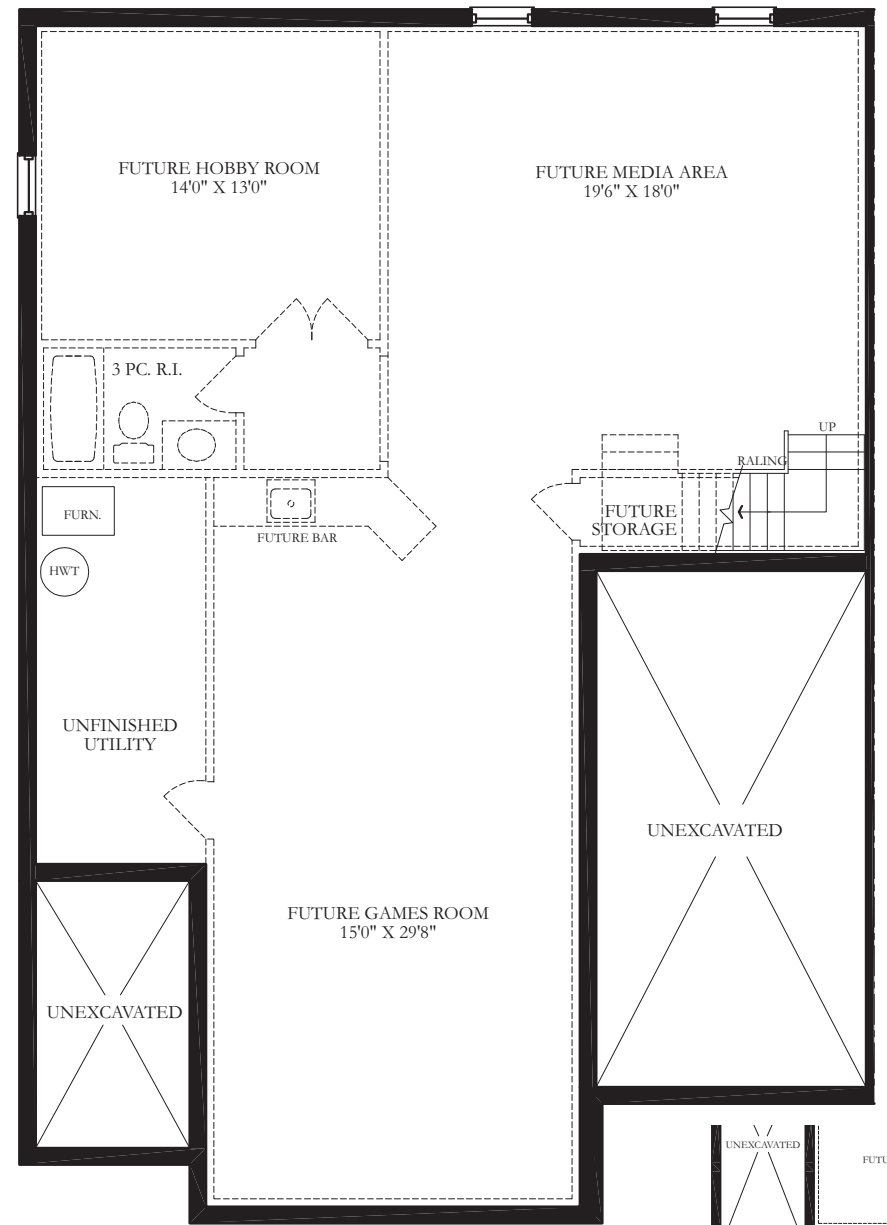
Specifications and dimensions correct at press time and are subject to change without notice. Artist's concept. E.&O.E. 2010



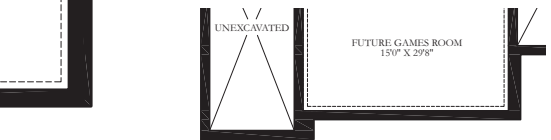
GROUND FLOOR  
ELEV "A"



GROUND FLOOR  
ELEV "B"



BASEMENT  
PLAN "A"



BASEMENT  
PLAN "B"

# Catamaran 1,360 sq.ft.

TH-4

Specifications and dimensions correct at press time and are subject to change without notice. Artist's concept. E.&O.E. 2010